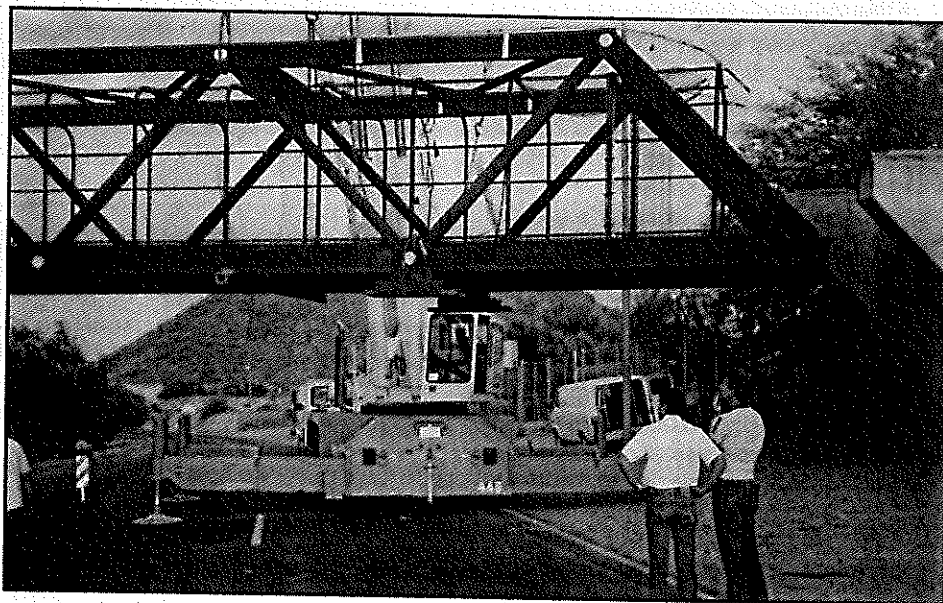


## Have bridge, will travel

A bridge across Dreamy Draw Drive in northeast Phoenix was literally picked up and moved to a new location while still intact. The Mercury Mine pedestrian bridge, which crossed a main north-south thoroughfare, was used primarily by students crossing to the nearby school. It was moved some six miles to its new location at 28th Street and Greenway Boulevard.

According to Ralph Goodall, Chief Design Engineer with the City of Phoenix, the bridge was originally scheduled for demolition by the Arizona Department of Transportation as part of the next phase of the Squaw Peak Parkway construction. The Paradise Valley School District was aware that a request had been made for a pedestrian bridge over the Greenway Parkway for the students of the Air Libre Elementary School.

It was determined that the Mercury Mine bridge would fit and, through an interdepartmental agreement, ADOT paid the costs of demolishing the bridge to Phoenix. Nearly \$99,000 of the total \$483,868 cost of moving and resetting



*Mike Poppe, (left) project manager for Precision Heavy Haul, with Terry Johnson, superintendent of Arizona Hydro Crane.*

the bridge at its new location was picked up by ADOT.

The bridge is 145 feet long, 12 feet wide and 12 feet high. The structure has a steel frame with a concrete deck and

weighs 145,000 pounds.

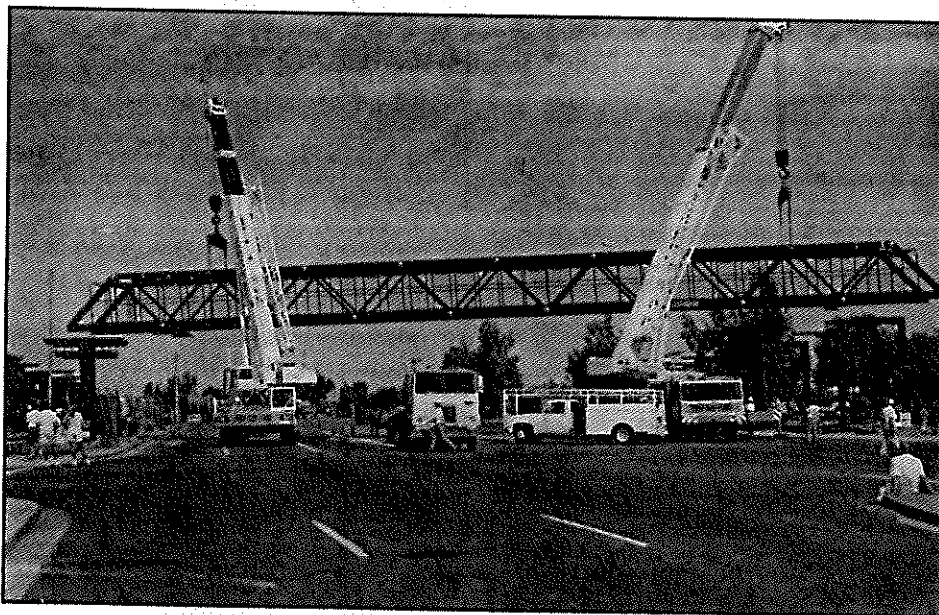
R. G. Johnson Contracting was the contractor for the job which went smoothly under project manager Paul Sheridan. The bridge was lifted from its abutments by a 165-ton Liebherr hydraulic crane and a 100-ton Linkbelt crane, both rented from Arizona Hydro Crane.

According to Al Bove with Arizona Hydro Crane, the hydraulics allowed the contractor to perform the job in about "half the time" that would have been needed with conventional equipment.

Precision Heavy Haul supplied the transport, which consisted of a nine-axle combination tractor and trailer with a total length of 170 feet and a special rear-end steerable unit.

Once mounted on the trailer, the bridge travelled at about 15 mph to its new destination. Goodall says the trip was much faster than anticipated (one hour was planned to move the bridge, but it arrived at its destination within 30 minutes).

Currently, the general contractor R. G. Johnson is building the access ramps to the bridge. ■



*The Mercury Mine Bridge, across Dreamy Draw Drive in Paradise Valley, was picked up and moved to a new location six miles away.*