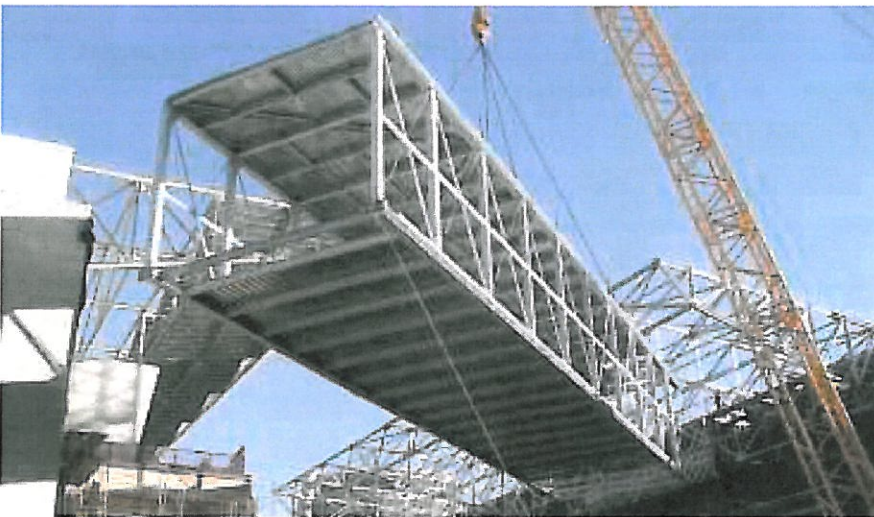


Arizona Best of 2008

Phoenix Convention Center Phase II

Honorable Mention: Steel



The \$350 million second phase of Phoenix's convention center will add 1.2 million sq ft within a structure evoking distinctive geographical features of Arizona. For example, massive steel canopies extend over Third Street to create the feel of a canyon, while colors, textures and finishes were selected to complement the desert landscape.

Schuff Steel and Herrick Corp. fabricated and erected 17,000 tons of structural steel, including the four-level main building, a parking structure and underground exhibit hall. A 30-ft-wide by 180-ft-long

pedestrian bridge was assembled offsite, trucked in and installed by crane, forming a glove-like fit between the two phases. In addition, Schuff supplied and installed over 1.3 million sq ft of floor and roof deck for the project.

The tight site footprint and busy urban setting were daunting obstacles, but precision planning and teamwork ensured a smooth completion of the steel portion by April 2008.

Submitted by: Schuff Steel Co.

Owner: City of Phoenix

Architect: HOK Venues

Contractor: Hunt-Russell-Alvarado

Structural Engineer: Magnusson

Klemencic Associates

Steel Fabricators: Schuff Steel;

Herrick Corp.

Steel Erection/PM: Schuff Steel Co.

Other: BDS Steel Detailers; Metro Steel & Verco Deck; Precision Heavy Haul; Maxim Crane Co.; Deep South Crane